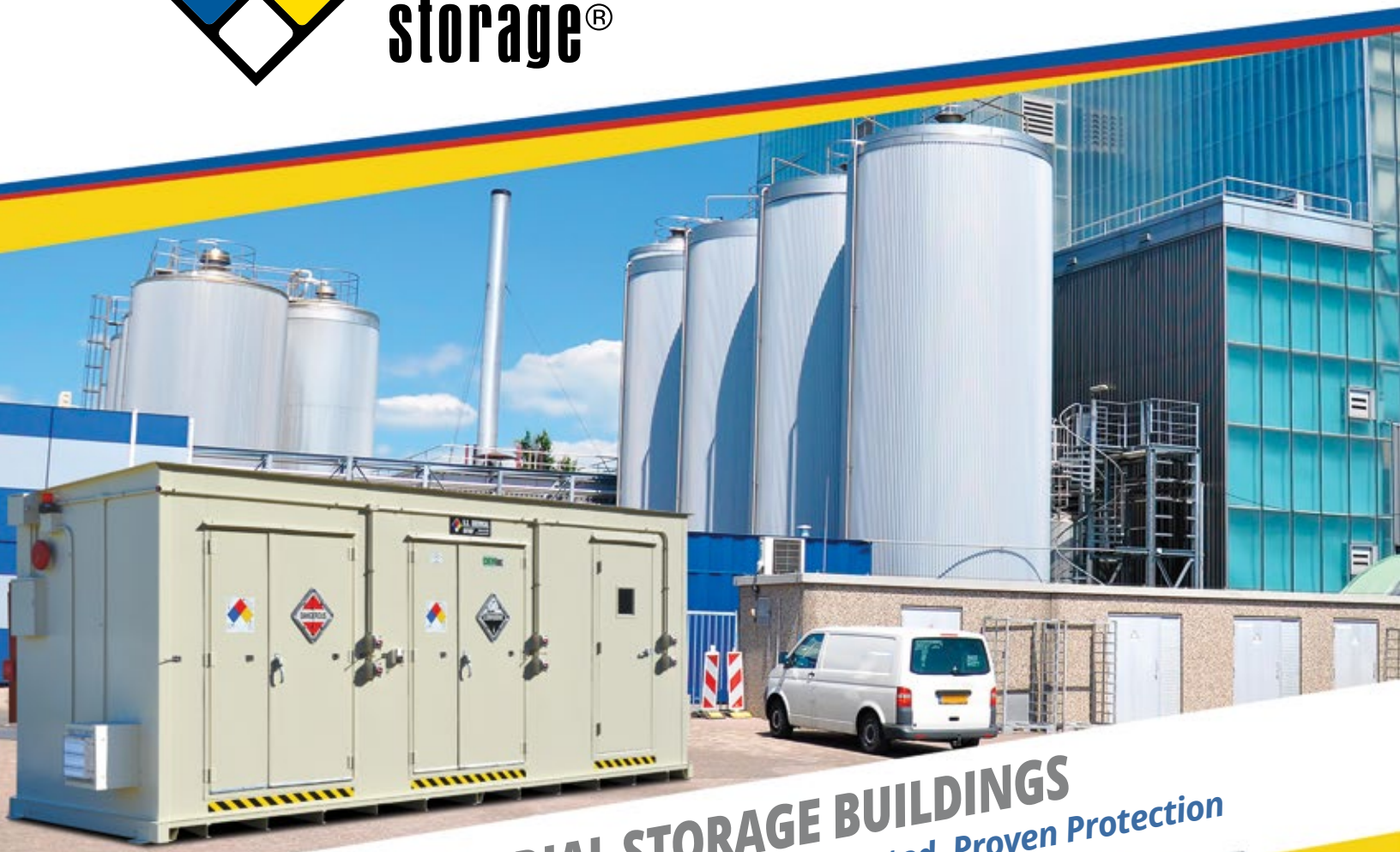


# U.S. CHEMICAL storage®



## HAZARDOUS MATERIAL STORAGE BUILDINGS

Compliance Expertise • Customized Solutions • Trusted, Proven Protection





# Our Expertise Becomes Your Peace of Mind

## Trust us to help you safely manage your risks when it comes to storing hazardous materials

US Chemical Storage is a leader in the design and manufacture of chemical storage buildings. We've earned the trust of blue-chip companies, the military, and government entities—let us put our experience and expertise to work for you. You don't necessarily need to have a big budget. Our consultative approach ensures you get the right building for the right application, without over or under spending.

We stand committed to provide you with a solution customized to your needs. Most clients have never bought a chemical storage building before, and when decisions need to be made, US Chemical's value comes in the form of peace of mind.

Each building is expertly engineered and crafted to provide compliant storage with secondary containment for your chemicals. In most cases, pre-fabricated construction offers a substantial cost savings over permanent site-built construction. U.S. Chemical Storage buildings are relocatable, providing you permanent storage in a movable package.

### Responsive, Free Expert Chemical Storage Consultation

Our experienced technical sales and engineering staff will do a comprehensive evaluation of your chemical storage needs and provide a solution tailored specifically to your application. Our goal is to provide you with the fastest quote turnaround—we usually do so within 24 hours. We'll work with you through the entire process, from design to project completion, ensuring your project is built to your requirements and arrives on time.

### Compliance Expertise

We'll work with you to help ensure compliance with applicable federal, state, and/or local regulatory requirements, including approval under most states' prefabricated building standards.

Most USCS designs are FM Approved under Class 6049



### Turnkey Solution

USCS offers complete design, delivery, installation, and maintenance services. We're here for you beyond your initial investment. Our exclusive Hazmat Storage Building Service and Maintenance Program addresses common aging downfalls in the years ahead. This preventative approach ensures your building remains functional for its entire useful life—offering higher productivity by avoiding time spent fixing problems, and increasing profitability by avoiding costs from storage downtime.

Customized to your needs  
Call 1-800-233-1480.





# Unmatched Safety and Quality

## Backed by the industry's longest warranty

**15 Year**  
Structural Warranty



### U.S. Chemical storage buildings feature:

- Continuously welded heavy-gauge steel construction
- Tubular steel framing for strength and durability
- Leakproof, all welded sump – 100% tested
- Heavy-duty, galvanized steel grate flooring
- Chemical- and weather-resistant coating, inside and out
- Coal tar coating on underside of building for increased corrosion resistance and longevity
- NFPA 704 diamond
- Multiple static grounding connections
- Forklift channels for easy relocation
- 15-year structural warranty

### A multitude of options are available to customize your building to your needs.

- Explosion relief panels to reduce the potential damage associated with an explosion
- Explosion-proof ventilation equipment for the safe removal of noxious or ignitable fumes
- Wet or dry fire suppression systems for added protection against accidental fires
- Vapor detection sensors and leak detection alarm systems for extra security
- Comfort heating and cooling for employees from 50°F to 70°F
- Process heating and cooling for your chemicals from 40°F to 250°F
- Fiberglass grating and poly liners for acids and corrosives
- Shelving and lighting options
- Emergency eyewash and shower systems
- Racking systems, floor rollers, and ramps
- Partition walls—solid and wire
- Door options—hinged, sliding, or coiling
- Non-combustible, two-hour or four-hour fire-rated construction

### Color Choices:



Custom colors: Available for a nominal additional charge.

### Types of Construction:

#### 1. Non-Combustible

**DRUMloc™ CHEMloc™ TURFloc™**

These non fire-rated solutions utilize non-combustible, weather-proof construction and offer an affordable way to store materials supplied in drums, general purpose chemical storage, and storage for pesticides, fertilizers, and other hazardous agri-chemicals. They can be customized with a variety of options, and can be constructed with explosion relief panels.

#### 2. Fire-Rated

**FIREloc™ SUPERloc™**

Use fire-rated construction for the storage of flammables for locations close to other existing structures. Many accessories and explosion relief panels are available.

**FIREloc™** features a two-hour fire rating with multiple layers of fire resistant gypsum wall board encased between interior and exterior heavy gauge steel. The roof and ceiling meet a Class A flame spread rating and wind uplift exceeds UL rating I-60. *Designed to be placed within 10- to 30-feet of existing structures and/or property lines.\**

**SUPERloc™** features a four-hour fire rating with the addition of insulation within the walls and two layers of interior drywall, making it the superior choice for safety and compliance. *Building can be located 10-feet from, or within existing structures.\**

*\*Check with local authorities about fire separation distances for your specific chemical storage applications.*



**U.S. CHEMICAL**  
**storage®**





## Palletized Drum Storage

Non-occupancy design of these buildings with full-face opening doors provides efficient forklift access to contents of palletized drum loads, and keeps personnel from entering a potentially hazardous environment.

- One to four bays, single or double-tiered
- Roll-up, double-sided access roll-up, hinged, or sliding doors
- Economical stationary racking system or optional convenient push-back racking for maximum storage capacity and flexibility

**Store up to 48 palletized loads (192 drums).**  
 For even larger sizes, we offer modular storage buildings—see page 11.



Capacity (55 Gallon Drums)	Nominal Outside Dimensions L x W x H (feet)	No of Tiers High	No of Bays	Capacity per Bay (Drums)	Bay Dimensions (inches)			Load Capacity per Building (pounds)	Sump Volume (gallons)	Interior Dimensions (inches)				
					Length	Depth	Height			Length	Width	Height	Sump Depth	
8	12 x 5 x 9	1	1	8	108	51	51	4,640	157	120	51	90	6	
12	16 x 5 x 9			12	156			6,960	220	168				
16	22 x 5 x 9		2	2	8			108	9,280	314				240
24	30 x 5 x 9				12			156	13,920	440				336
16	12 x 5 x 11	2	4	8	108			9,280	157	120	114			
32	22 x 5 x 11							18,560	314	240				
24	16 x 5 x 11		2	2	12			156	13,920	220	168			
48	30 x 5 x 11								27,840	440	336			

Chart represents a small sampling of sizes from our complete model line.



## IBC Tote Storage

Safely store, organize, and easily access intermediate bulk containers. Built with exceptional strength, these buildings feature higher tiers and larger sump capacities for secondary containment of liquid totes. Wide door openings offer easy forklift access to totes—no need for personnel to enter the building.

- Single or double-tiered with up to 4 storage bays
- Roll-up, double sided access roll-up, hinged, or sliding doors
- Use fire-rated roll-up doors when open access to contents is needed during working hours. They feature a fusible link to automatically close the doors in the event of fire.
- Economical industrial racking endures daily wear, tear, loading and unloading
- Optional convenient push-back racking system features patented gravity pull system—after removing the closest palletized tote, the next palletized tote moves forward to the front of the building.

**Store up to 48 totes.**  
For even larger sizes, we offer modular storage buildings—see page 11.



Push-Back Racking System



Capacity (Totes)	Nominal Outside Dimensions L x W x H (feet)	No of Tiers High	No of Bays	Capacity per Bay 350 gallon IBCs	Bay Dimensions (inches)			Load Capacity per Building (pounds)	Interior Dimensions (inches)				Sump Volume (gallons)						
					Length	Depth	Height		Length	Width	Height	Sump Depth							
2	12 x 5 x 9	1	1	2	108	51	60	8,000	120	51	83	15	390						
3	16 x 5 x 9		2	3	156			12,000	168		86	10.5	385						
4	22 x 5 x 9			2	108			16,000	240		90	8	419						
6	16 x 5 x 12	2	2	3	156	51	60	24,000	168	126	10.5	8	385						
8	22 x 5 x 12			2	108			32,000	240					8	419				
12	30 x 5 x 12		4	3	156			51	60					48,000	336	126	6	8	440

Chart represents a small sampling of sizes from our complete model line.



# Single Drums & Small Container Storage

Keep hazardous chemicals away from your facility by storing them in buildings designed and outfitted for chemical storage. Sixty-inch double door entry allows personnel entrance and egress with a drum dolly while opening to full width for larger equipment and pallet placement.

- Optional ramp simplifies drum loading
- Optional, versatile shelving organizes bottles, flasks, vials, re-sealable containers
- Optional multi-compartment storage with solid walls or wire partitions to segregate incompatible materials or processes

**Store up to 100 single drums or multiple small containers**  
 For even larger sizes, we offer modular storage buildings—see page 11.



Total Drum Capacity (55 gallon drums)	Load Capacity (pounds)	Nominal Outside Dimensions L x W x H (feet)	Sump Volume (gallons)	Floor Space (sq ft)	Inside Dimensions (inches)			Door Opening (inches)	
					Length	Width	Height	Width	Height
8	18,000	8 x 8 x 9	134	36	72	72	80	60	80
12	24,000	10 x 8 x 9	179	48	96	72	80	60	80
24	48,000	14 x 10 x 9	359	96	144	96	80	60	80
35	70,000	16 x 12 x 9	523	140	168	120	80	60	80
60	120,000	32 x 10 x 9	897	240	360	96	80	60	80
85	170,000	36 x 12 x 9	1271	340	408	120	80	60	80
100	200,000	52 x 10 x 9	1495	400	600	96	80	60	80

Chart represents a small sampling of sizes from our complete model line.





## Mixing / Dispensing Process Isolation

Separate hazardous processes from the normal working environment by using pre-engineered buildings as process isolation rooms. Built to your requirements for your specific application, each room includes a containment sump to capture spills. Structures come completely assembled and ready to install by connecting electrical, plumbing, ventilation ductwork and sprinklers as applicable. Relocate portable buildings as your plant configuration changes.

Some common applications:

- Dry pigment mixing
- Hazardous coating operations
- Waste liquid collection
- Acid etching
- Paint mixing
- Household hazardous waste
- Solvent distillation

Optional accessories include:

- Fume collection hoods
- Climate control
- General ventilation
- Explosion detection systems
- Explosion relief panels
- Work tables and benches
- Safety showers



Total Drum Capacity (55 gallon drums)	Load Capacity (pounds)	Nominal Outside Dimensions L x W x H (feet)	Sump Volume (gallons)	Floor Space (sq ft)	Inside Dimensions (inches)			Door Opening (Inches)	
					Length	Width	Height	Width	Height
8	18,000	8 x 8 x 9	134	36	72	72	80	60	80
12	24,000	10 x 8 x 9	179	48	96	72	80	60	80
24	48,000	14 x 10 x 9	359	96	144	96	80	60	80
35	70,000	16 x 12 x 9	523	140	168	120	80	60	80
60	120,000	32 x 10 x 9	897	240	360	96	80	60	80
85	170,000	36 x 12 x 9	1271	340	408	120	80	60	80
100	200,000	52 x 10 x 9	1495	400	600	96	80	60	80

Chart represents a small sampling of sizes from our complete model line.





## Temperature Controlled Storage

Configured to safely store temperature sensitive chemicals, these buildings keep chemicals above or below ambient temperature. Designs accommodate heating or cooling, with fire-rated storage with explosion proof refrigeration and/or either steam or explosion proof electric heat. Upgrade standard control systems to PLC controls for easy operation and outputs to your plant monitoring and control systems. The heating coils are mounted up and out of the way to prevent damage, clogging or incidents from any dripping liquids coming in contact with the hot coils.

- Steam or electric heat (XP or non-XP)
- Cooling systems with optional redundancy
- Explosion proof cooling systems available
- Optional PLC controls
- Available fire-rated construction
- Compliant containment sumps
- Door options include fire-resistive hinged doors or insulated, fire-rated coiling doors
- Temperatures to 250° F for heating and 40° F for cooling



Programmable Logic Controller

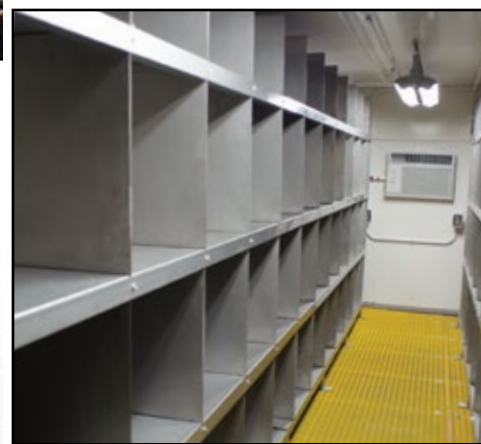






## Household Hazardous Waste

Separate incompatible chemicals that come from the general public and increase safety for communities and the environment. Buildings feature multiple compartments for storage of flammables, corrosives, and hazardous materials that require separation from each other.



## Lithium Battery Storage

Safe lithium battery storage for both new and spent units is currently in the forefront with evolving regulatory requirements. Whether you have 50 or 500 batteries to manage, these buildings offer a compliant solution for storing individual cells from recycling applications as well as pallets of cells used in industrial manufacturing applications. Common options include cooling or heating systems (depending on geographical location), shelving systems and mechanical ventilation.



## Turf Chemicals

Safely manage herbicides, fungicides, pesticides, fertilizers, and other agri-chemicals in TurfLoc™ buildings that store up to thirty-three 55-gallon drums or a wide variety of container types. Purpose-built and packaged with the right accessories for agricultural/turf chemical storage, they are painted in a pleasant green shade to blend in almost any environment.



TURFloc™ Chemical Storage Buildings

Total Drum Capacity (55 gallon drums)	Load Capacity (pounds)	Nominal Outside Dimensions L x W x H (feet)	Sump Volume (gallons)	Floor Space (sq ft)	Inside Dimensions (inches)			Door Opening (inches)		Number of Doors
					Length	Width	Height	Width	Height	
6	8,203	6 x 8 x 8	154	32.81	63	75	86	52	79	1
12	14,453	10 x 8 x 8	271	57.81	111	75	86	52	79	1
10	10,891	11 x 5 x 8	190	43.56	123	51	86	106	79	1
21	23,828	16 x 8 x 8	447	95.31	183	75	86	52	79	2
33	36,328	24 x 8 x 8	683	145.31	279	75	86	52	79	3

Chart represents a small sampling of sizes from our complete model line.



## Small Quantity Storage

Pre-engineered, quick delivery outdoor lockers offer compliant storage for hazardous chemicals stored in 55-gallon drums, 5-gallon pails, and other small volume containers. These highly portable smaller units offer many of the same safety features found in U.S. Chemical Storage's large buildings, including a leakproof sump with removable, galvanized steel grate floor, inside and outside grounding lugs, anchoring plates for hold-down protection, and natural draft ventilation.

- Non-combustible construction with a three-point latching, 54-inch single door for easy pallet loading, 6-drum and larger.
- Fire-rated construction with third-party listed, fire-rated double door—right side door for personnel entrance; left side door opens from inside to achieve 60-inch opening for drum loading. Door closer included on fire-rated models as required by code.
- Customizable options include explosion-proof panels, lighting, shelving, fire protection systems and more

**Store from two to sixteen 55-gallon drums**  
For even larger sizes, we offer modular storage buildings—see page 11.



Total Drum Capacity (55 gallon drums)	Load Capacity (pounds)	Nominal Outside Dimensions L x W x H (feet)	Sump Volume (gallons)	Floor Space (sq ft)	Inside Dimensions (inches)			Door Opening (inches)	
					Length	Width	Height	Width	Height
2	2,323	5 x 3 x 6	75	9.29	50.5	26.5	52.5	41	50
4	4,428	5 x 5 x 6	71	17.71	50.5	50.5	59.0	41	50
6	6,532	7 x 5 x 8	105	26.13	74.5	50.5	81.0	59	79
9	9,636	7 x 7 x 8	155	38.54	74.5	74.5	81.0	59	79
12	12,740	9 x 7 x 8	205	50.96	74.5	98.5	81.0	59	79
16	16,844	9 x 9 x 8	272	67.38	98.5	98.5	81.0	59	79

Chart represents a small sampling of sizes from our complete model line.





## Modular Storage

**U.S. Chemical Storage manufactures buildings that hold up to 136 drums in a single 60-foot x 12-foot building. If your space or storage requirements exceed this limit, we can still help by providing a *modular* solution tailored to your specific need.**

When storage buildings become too large to ship completely assembled, modular structures offer an alternative method of construction. Your structure arrives ready for mating and fastening together. Assembled and wired at the factory, the sections are then taken apart and packaged in shippable modules.

Our proprietary bolt-together design, along with our detailed assembly drawings, makes on-site assembly precise and easy. Modules arrive pre-wired for efficient assembly—only require box-to-box connections to finish the electrical.

The modular building technique using multiple pieces applies to nearly any size U.S. Chemical Storage structure. This offers an effective solution if you have limited openings in the buildings or they are not large enough to accommodate the structure you need fully assembled, or if you have narrow aisles or other obstructions that would hinder the movement or proper placement of your structure within your facility.

U.S. Chemical Storage has professional site supervisors to work with your assembly contractor, or we can provide trained assembly crews that will install your building for a turnkey installation.







## **OUR EXPERTISE BECOMES YOUR PEACE OF MIND**

Understanding hazardous chemicals and the regulations governing their safe storage and use can be very daunting. Our years of proven experience and technical staff of engineers and salespeople will help you through the process of finding the right storage solution, tailored to your individual requirements.

Our range of buildings covers every need, from storing small containers or lithium batteries, large quantities of IBCs, 2 to 192 drums, to large-scale modular storage. Customized options ensure your chemicals are properly stored. We'll work with you through the entire process, from concept through completion, including installation if needed, to ensure your hazardous material building is delivered and fully operational for years to come. U.S. Chemical Storage buildings are backed by a 15-year structural warranty, the longest in the industry.

***Your peace of mind comes in knowing you've made the best choice to safely store chemicals and protect your people and facility—24/7, 365 days a year.***

***Call us today at 1-800-233-1480.***

